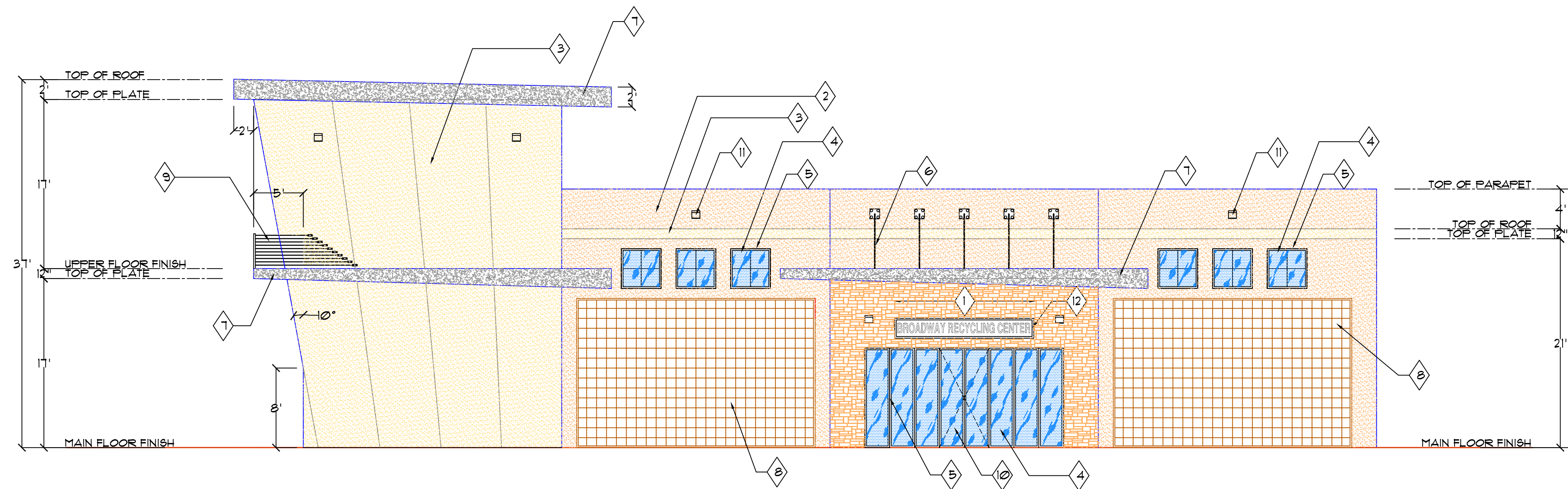


**PROPOSED SOUTH (FRONT) ELEVATION**

SCALE: 1/8"=1'-0"

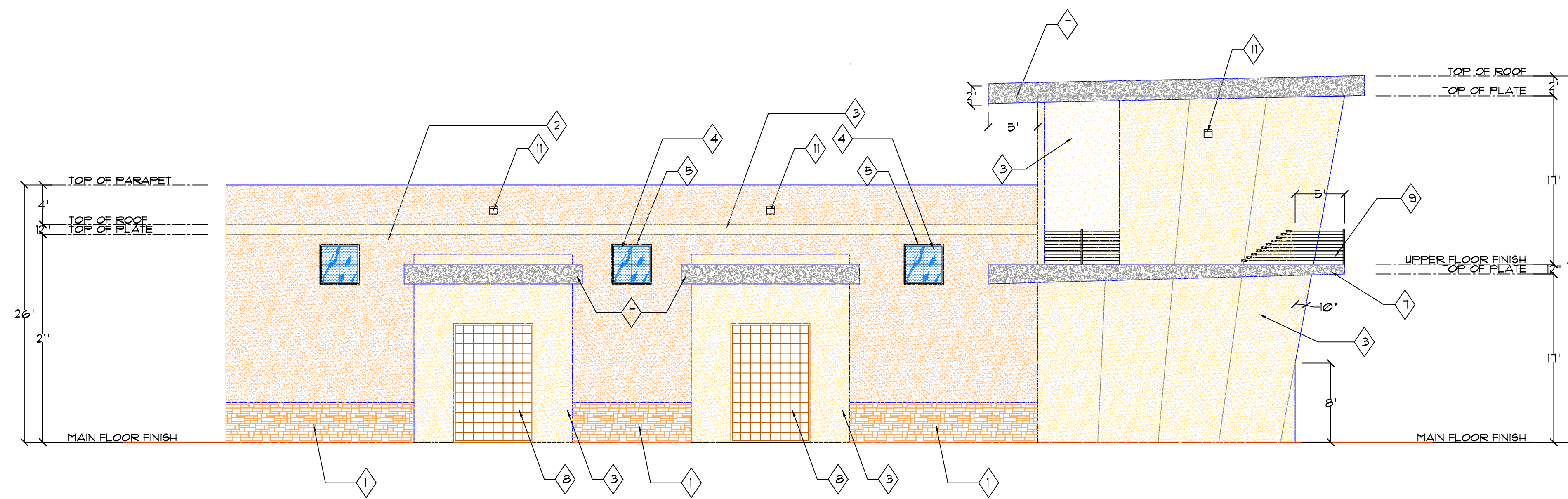
**MATERIALS LEGEND**

- 1 STONE VENEER TO BE ICC-ES EER-3568 EL DORADO STONE. TO BE INSTALLED PER MANUF. SPECIFICATIONS.
- 2 EXTERIOR WALLS FINISH W/ 1/8 STUCCO OVER 60 MIN. FELT (TYP) USING 'LA HABRA' X-71 MIAMI PEACH (BASE 200)
- 3 EXTERIOR WALLS FINISH W/ 1/8 STUCCO OVER 60 MIN. FELT (TYP) USING 'LA HABRA' X-55 FRENCH VANILLA (BASE 100)
- 4 TEMPERED GLASS WINDOW PANEL.
- 5 BLACK ALUMINUM FRAMING STOREFRONT SYSTEM AT ALL WINDOWS AND DOORS.
- 6 1/4" DIAMETER HIGH STRENGTH, WEATHER-TOUGH, TYPE 316 STAINLESS STEEL CABLE BY CABLERAIL (DECORATIVE PURPOSE ONLY).
- 7 ALUMINUM FASCIA NATURAL COLOR WITH RUST-FREE COATING INSTALLED AT ALL OVERHANGS.
- 8 DECORATIVE ALUMINUM ROLL-UP DOOR PAINTED DARK BROWN. HEIGHTS AND WIDTHS PER DOORS AND WINDOWS SCHEDULE.
- 9 RAILING SYSTEM TO BE 1/4" DIAMETER HIGH STRENGTH, WEATHER-TOUGH, TYPE 316 STAINLESS STEEL CABLE BY CABLERAIL.
- 10 TEMPERED GLASS DOOR PANEL.
- 11 TYPICAL FLUORESCENT WALL MOUNTED LIGHT FIXTURE WITH ELECTRONIC BALLASTS.
- 12 ALUMINUM SIGN (COLOR & LETTERING BY OWNER).



**PROPOSED EAST (LATERAL) ELEVATION**

SCALE: 1/8"=1'-0"



**PROPOSED WEST (LATERAL) ELEVATION**

SCALE: 1/8"=1'-0"