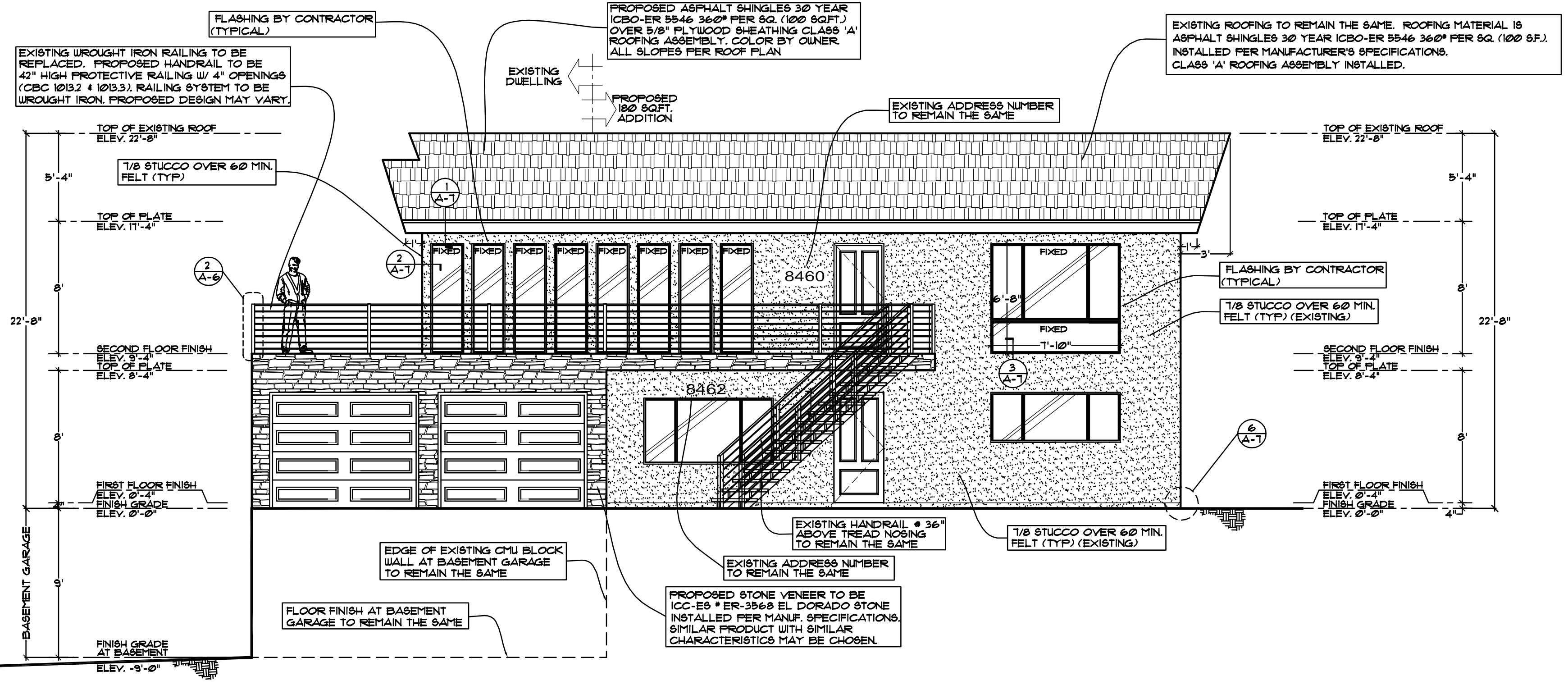


**GENERAL NOTES**

- ALL EXTERIOR WALLS TO BE 1/8" STUCCO OVER 60 MIN. FELT (TYP) COLOR BY OWNER.
- EXISTING ROOFING TO REMAIN THE SAME. ROOFING MATERIAL IS ASPHALT SHINGLES 30 YEAR ICBO-ER 5546 360° PER SQ. (100 SF.). INSTALLED PER MANUFACTURER'S SPECIFICATIONS. CLASS 'A' ROOFING ASSEMBLY INSTALLED.
- EXISTING UNDERLAYMENT TO REMAIN THE SAME. A MINIMUM TYPE 30 ASPHALT-SATURATED ORGANIC FELT MUST BE USED FOR ALL SOLID SHEATHING APPLICATIONS. THE UNDERLAYMENT IS DRAPED OVER THE RAFTERS TO ALLOW WATER DRAINAGE. UNDERLAYMENT SIDE LAPS ARE 4 INCHES MINIMUM.
- FLASHING: ALL VALLEYS ARE PROVIDED WITH NO. 28 GAGE CORROSION-RESISTANT METAL FLASHING EXTENDING A MINIMUM OF 1" FROM THE VALLEY CENTER LINE EACH WAY, WITH A SPLASH DIVERTER AS PART OF THE FLASHING.
- FOR ALL NEW ROOFING VERIFY WIND TAB REQUIREMENTS WITH MANUFACTURER'S SPECIFICATIONS AND RECOMMENDATIONS, LOCAL BUILDING DEPARTMENT. CLASS 'A' INSTALLED. SEE STRUCTURAL ROOF PLANS FOR RAFTER SIZES, HEADERS & SHEARS.
- VERIFY WITH OWNER ALL MATERIALS, MATERIAL COLORS AND LOCATIONS PRIOR TO INSTALLATION.
- SEE CIVIL DRAWINGS FOR FINAL GRADING IF REQUIRED.
- SEE ARCHITECTURAL INFORMATION PLAN FOR ADDITIONAL SITE WALL INFORMATION (IF APPLICABLE).
- SEE ROOF PLAN FOR ADDITIONAL ROOF INFORMATION.
- WINDOWS SHALL BE TEMPERED GLASS, MULTI-LAYERED GLASS PANELS OR GLASS BLOCK HAVING A FIRE-PROTECTION RATING OF NOT LESS THAN 20 MINUTES. GLAZING FRAMES MADE OF VINYL SHALL HAVE WELDED CORNERS, METAL REINFORCED IN THE INTERLOCK AREA (County Fire Code Appendix II-a 26.2.1)

**COUNTY FIRE CODE NOTES FOR FIRE-RESISTIVE CONSTRUCTION IN HAZARDOUS FIRE AREAS PREVENTION**

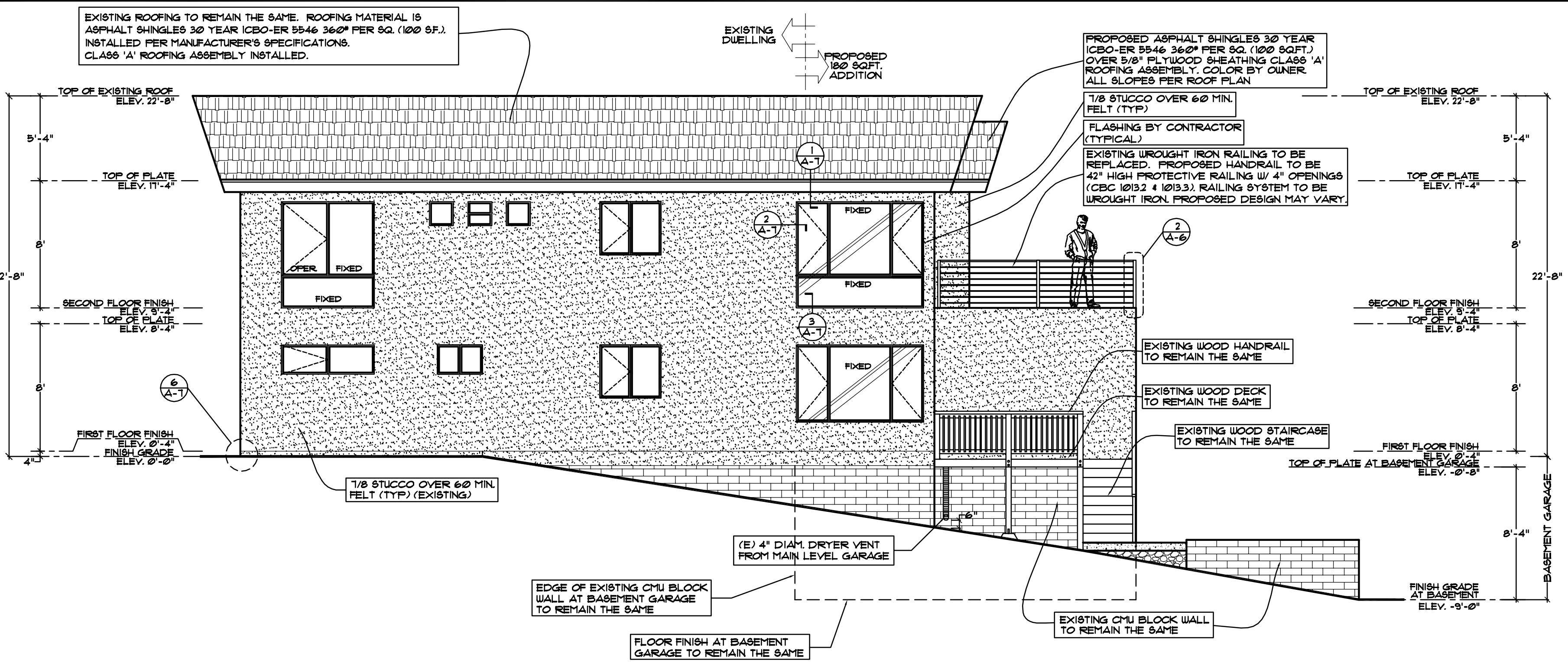
1. WALLS: Exterior wall surfaces must be non-combustible. Show on elevation sheet. (e.g. stucco, masonry, cement fiber board, etc.). (County Fire Code Appendix II-A § 26.2.3)
2. EAVES: Combustible eaves, soffits and fascias shall be constructed as required in guidance documents (Form DPLU #198). (County Fire Code Appendix II-A § 26.2.5)
3. UNENCLOSED UNDERFLOOR shall be enclosed to the ground with non-combustible construction or approved alternative. (County Fire Code Appendix II-A § 26.3.6)
4. VENTS: Vents are generally prohibited in overhang areas. Vent openings shall be louvered metal and covered by 1/4-inch noncombustible, corrosion-resistant metal mesh or equivalent. (County Fire Code Appendix II-A § 26.2.4.1, § 26.2.4.2)
5. GLAZING: (windows) restricted to tempered glass or multi-layered glass panels, or glass block having a fire-protection rating of not less than 20 minutes, or other assemblies approved by fire authority. Glazing frames made of vinyl shall have welded corners, metal reinforced in the interlock area. See attached manufacturers' info documenting compliance. (County Fire Code Appendix II-A § 26.2.1, § 26.2.2, § 26.3.7)
6. SKYLIGHTS: shall be tempered glass or a class "A" rated assembly. (County Fire Code Appendix II-A § 26.3.7)
7. GUTTERS & DOWNSPOUTS: shall be constructed of non-combustible material and designed to reduce accumulation of leaf litter and debris. (County Fire Code Appendix II-A § 26.3.3)
8. EXTERIOR DOORS: shall be approved ignition-resistant construction, solid-core wood not less than 1 3/4" thick, or have fire protection rating of not less than 20 minutes. Note on door schedule. (County Fire Code Appendix II-A § 26.3.4)
9. PROJECTIONS: (decks, carports, balconies, patio covers, etc.) shall be of non-combustible construction, fire-retardant treated wood (pressure-treated, installed per listing), heavy timber construction, or one-hour fire-resistive construction. See details on plans. When attached to exterior walls, they shall be constructed to maintain the fire-resistive integrity of the wall. (County Fire Code Appendix II-A § 26.3.6)
10. FENCES AND OTHER ATTACHMENTS: the first five feet of fences and other items attached to a structure shall be constructed on non-combustible material or meet the same fire-resistive standards as the exterior walls of the structure. (County Fire Code Appendix II-A § 26.3.5)



**EXISTING + PROPOSED FRONT (SOUTH) ELEVATION**

SCALE: 1/4"=1'-0"

MAXIMUM BUILDING HEIGHT AFTER REMODEL AND ADDITION WILL REMAIN THE SAME.



**EXISTING + PROPOSED REAR (NORTH) ELEVATION**

SCALE: 1/4"=1'-0"

MAXIMUM BUILDING HEIGHT AFTER REMODEL AND ADDITION WILL REMAIN THE SAME.