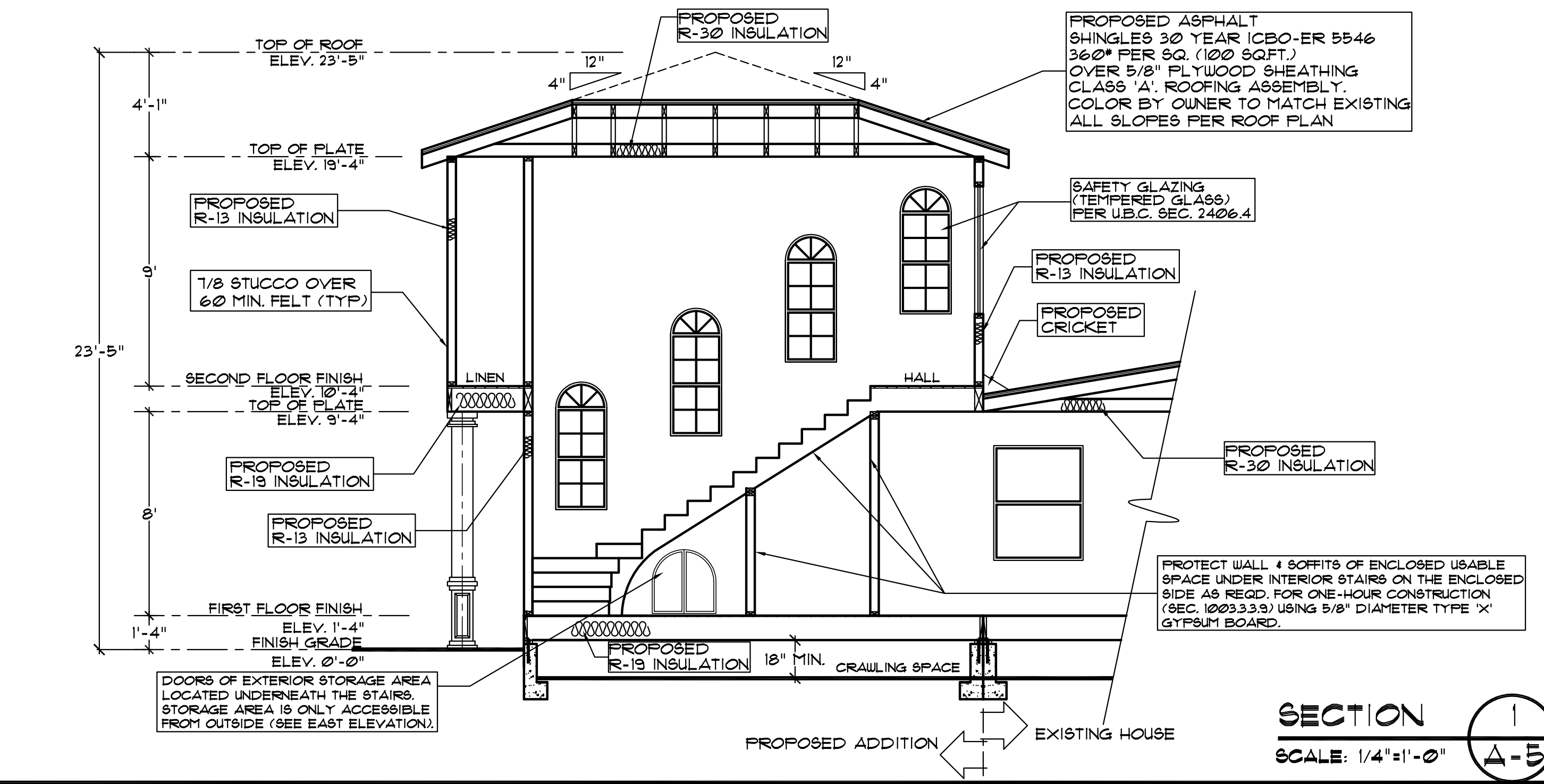


PROPOSED NORTH (REAR) ELEVATION
SCALE: 1/4"=1'-0"



SECTION 1
SCALE: 1/4"=1'-0" A-5

HANDRAILS:
A. Handrail Continuity. Handrail gripping surfaces shall be continuous, without interruption by newel posts, other construction elements or other obstructions.
Exceptions:
1. Handrails within single-family dwelling units or in private stairways within individual units or multi-family dwelling units (apartments, condominiums, townhouses) are permitted to be interrupted by a newel post at a stair landing.
2. Handrails within single-family dwelling units or in private stairways within individual units (apartments, condominiums, townhouses), may have started or volute newels within the lowest tread.

B. Handrail Graspability. The handgrip portion of the handrail must not be less than 1 1/4 inches or more than 2 inches in cross-sectional dimension, or the configuration of the handgrip portion must be such that it provides an equivalent, graspable shape. (Disabled access requirements as set forth in the State of California Title 24, Ch 11B, Div III, Sec. 1133B.4 requires this dimension to be not less than 1 1/4 inch and not more than 1 1/2 inch). Handrails must be adequately graspable. To provide adequate support or to adequately grasp the handrail, the shape of the handgrip portion must be such a shape that it is possible for the potential user of the handrail to actually wrap their fingers around the portion of the handrail and, thereby obtain support.

C. Handrail Surface. The handgrip portion of handrails shall have a smooth surface with no sharp or abrasive elements. Any wall or other surface adjacent to the handrail shall be free of sharp or abrasive elements. Edges shall have a minimum radius of 1/8 inch. Gripping surfaces (top or sides) shall be uninterrupted by newel posts, other construction elements or obstructions.

D. Handrail Clearance. The clear space between handrail and a wall or other surface shall be a minimum of 1 1/2 inches.

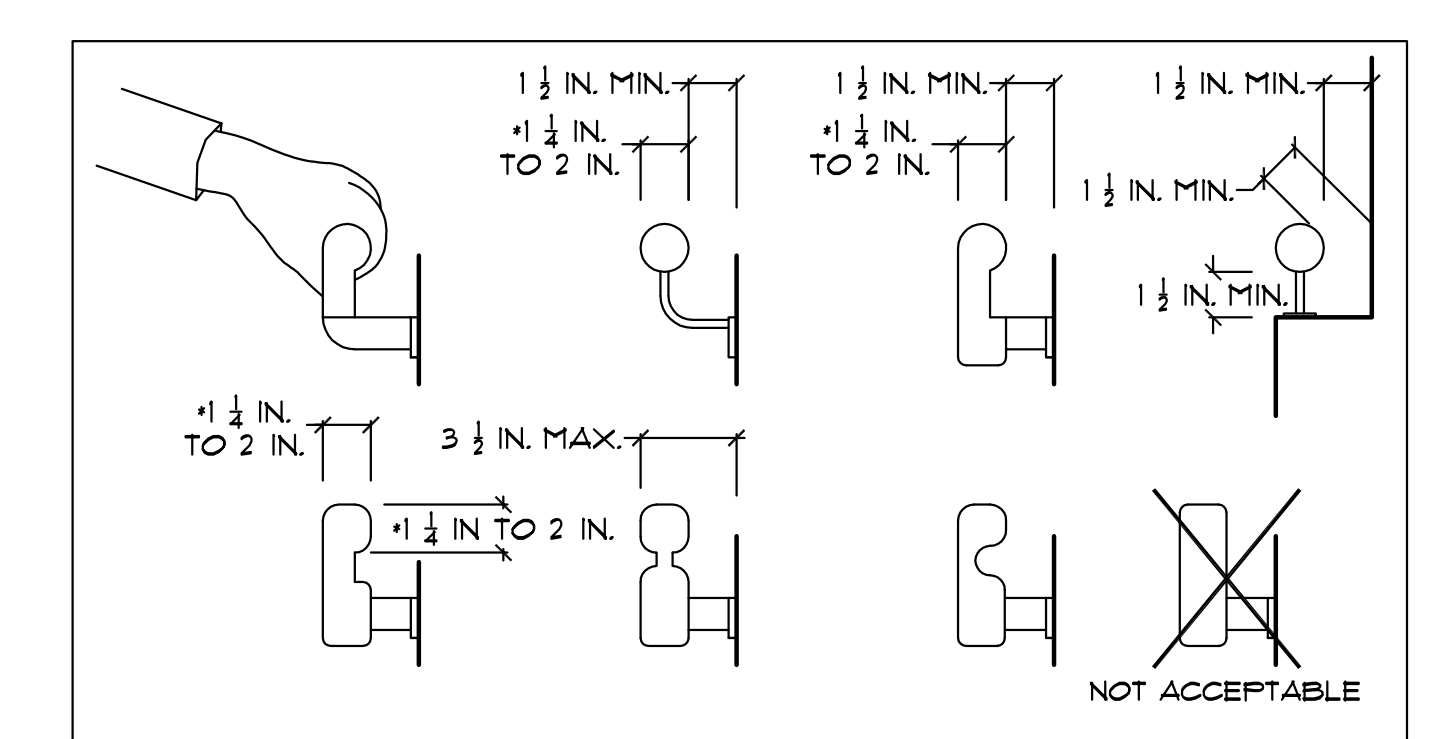
E. Handrail Projection. Projections into the required width of the stairway at each handrail shall not exceed 3 1/2 inches.

F. Handrail Extension. Handrails shall extend horizontally a minimum of 12 inches beyond the top nosing and 12 inches, plus the tread width, beyond the bottom nosing.
Exception: Handrails within single-family dwelling units and within individual units of multi-family dwelling units (apartments, condominiums, townhouses) that is not required to be disabled accessible, do not require handrail extensions.

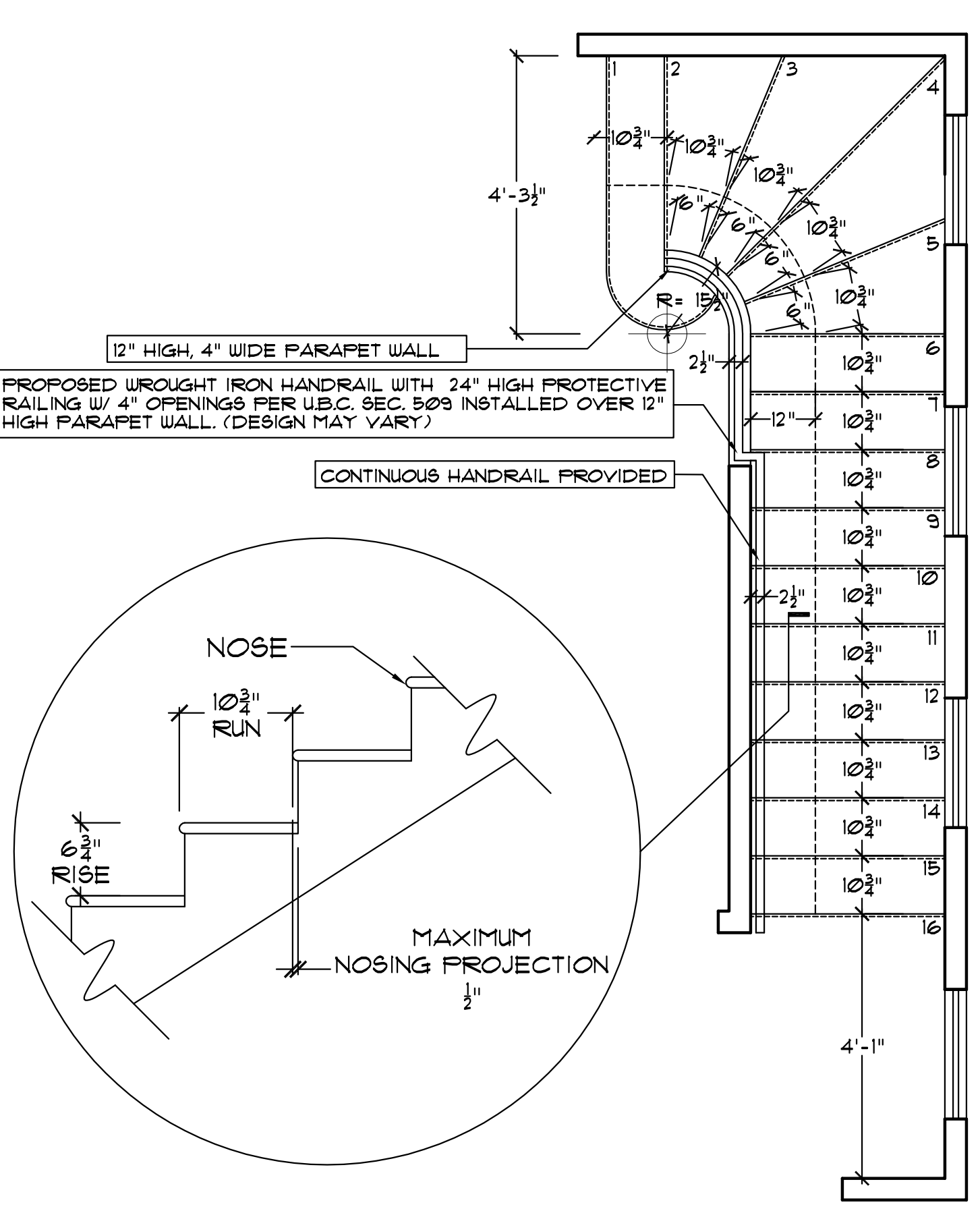
G. Handrail Termination. Handrail ends shall return to a wall, guard or the walking surface or shall be continuous to the handrail of an adjacent stair flight or shall have rounded terminations or bends or shall terminate in newel posts or safety terminals.

H. Handrail Height. The height measured from top of handrail and handrail extensions above landings and the stair tread nosings, shall be uniform, not less than 34 inches and not more than 38 inches.

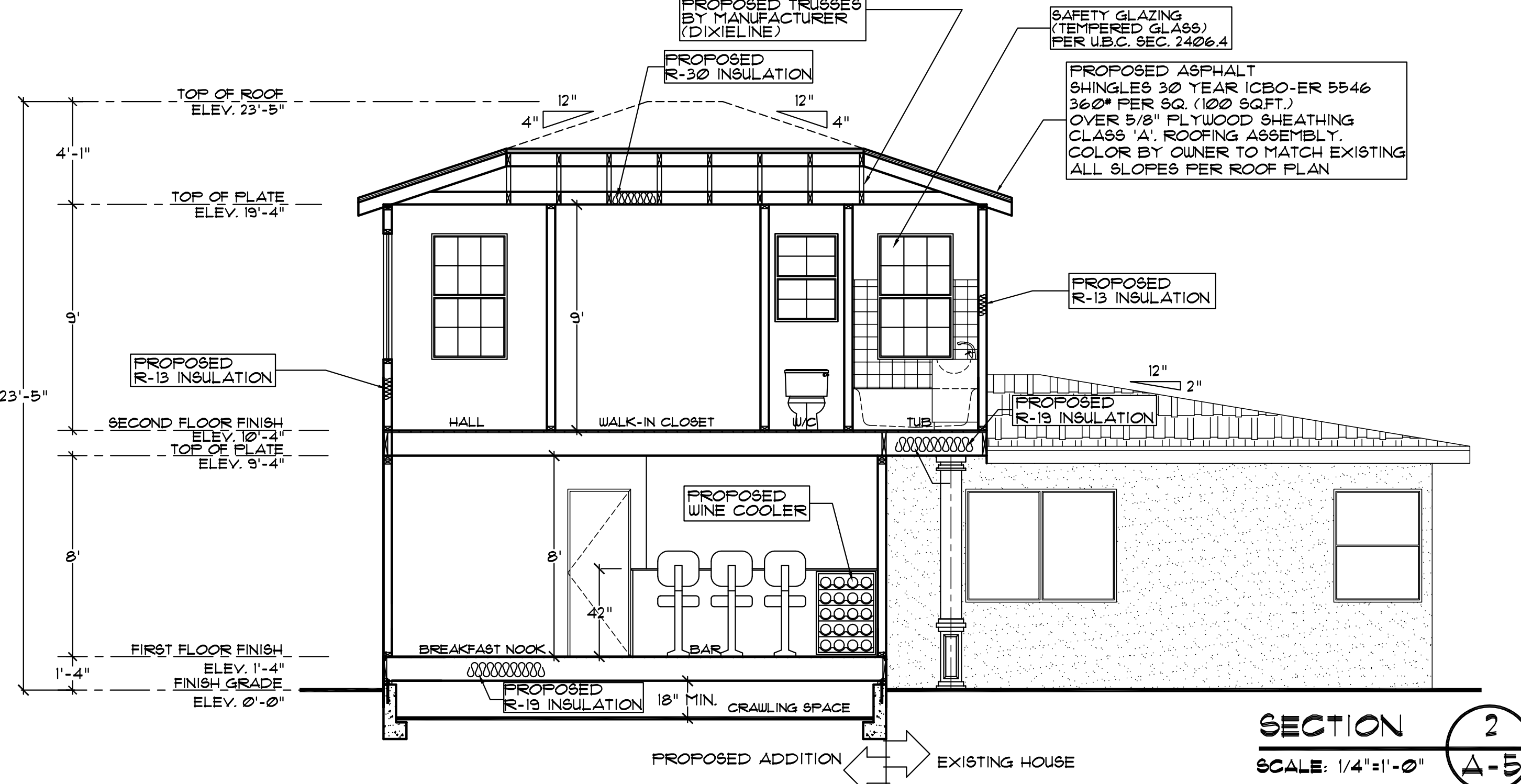
NOTE: Other shapes may be acceptable if they provide an equivalent gripping surface.
See third paragraph of section 1003.3.6.
*Disabled access requirements as set forth in the State of California Title 24, Ch 11B, Div. III, Sec. 1133B.4 requires this dimension to be not less than 1 1/4 inch and not more than 1 1/2 inch



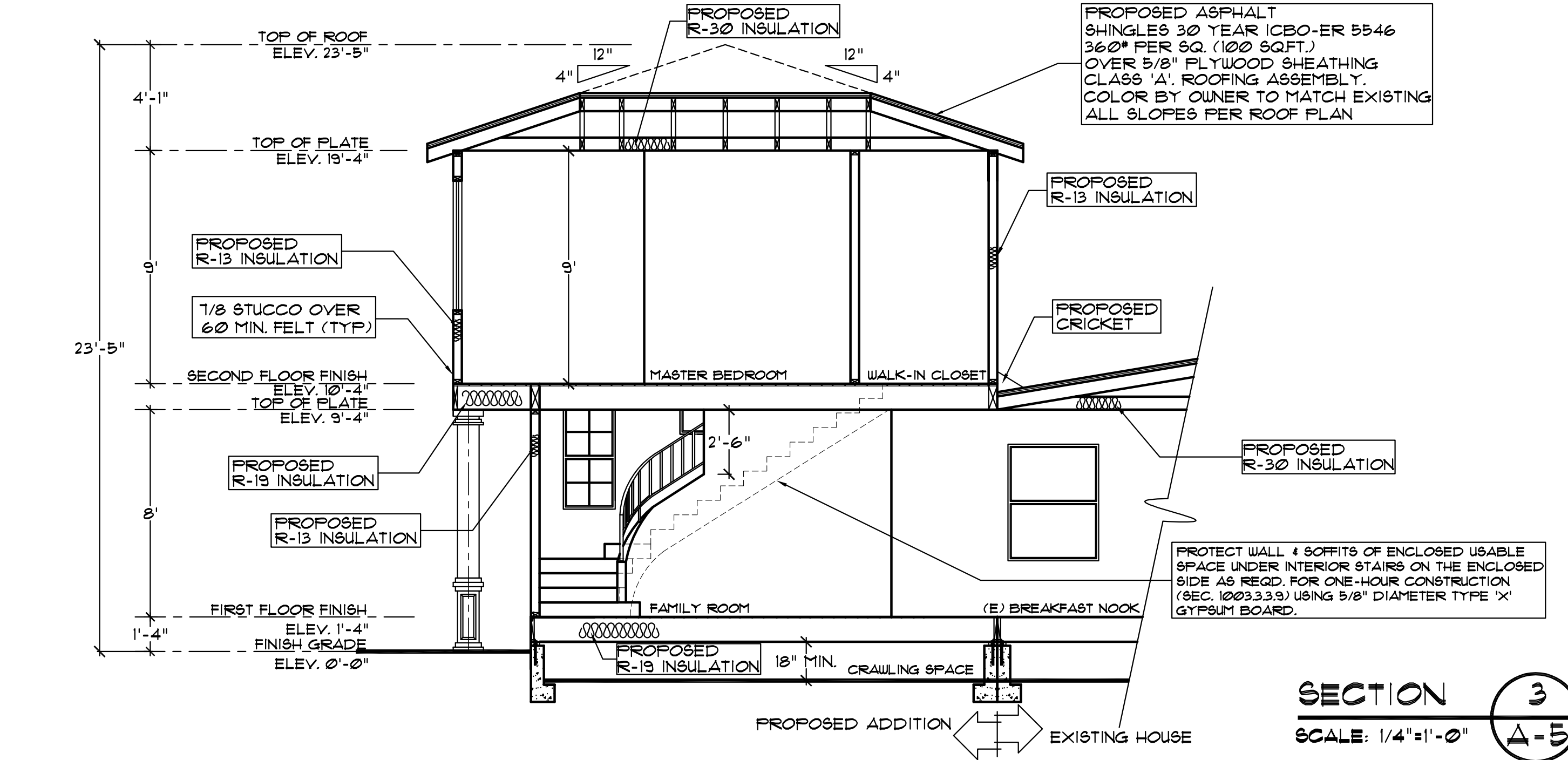
Handrail-Acceptable Shapes and Installations



COMBINATION OF STRAIGHT STAIRWAYS WITH WINDING STAIRWAYS
SCALE: 1/2"=1'-0"



SECTION 2
SCALE: 1/4"=1'-0" A-5



SECTION 3
SCALE: 1/4"=1'-0" A-5