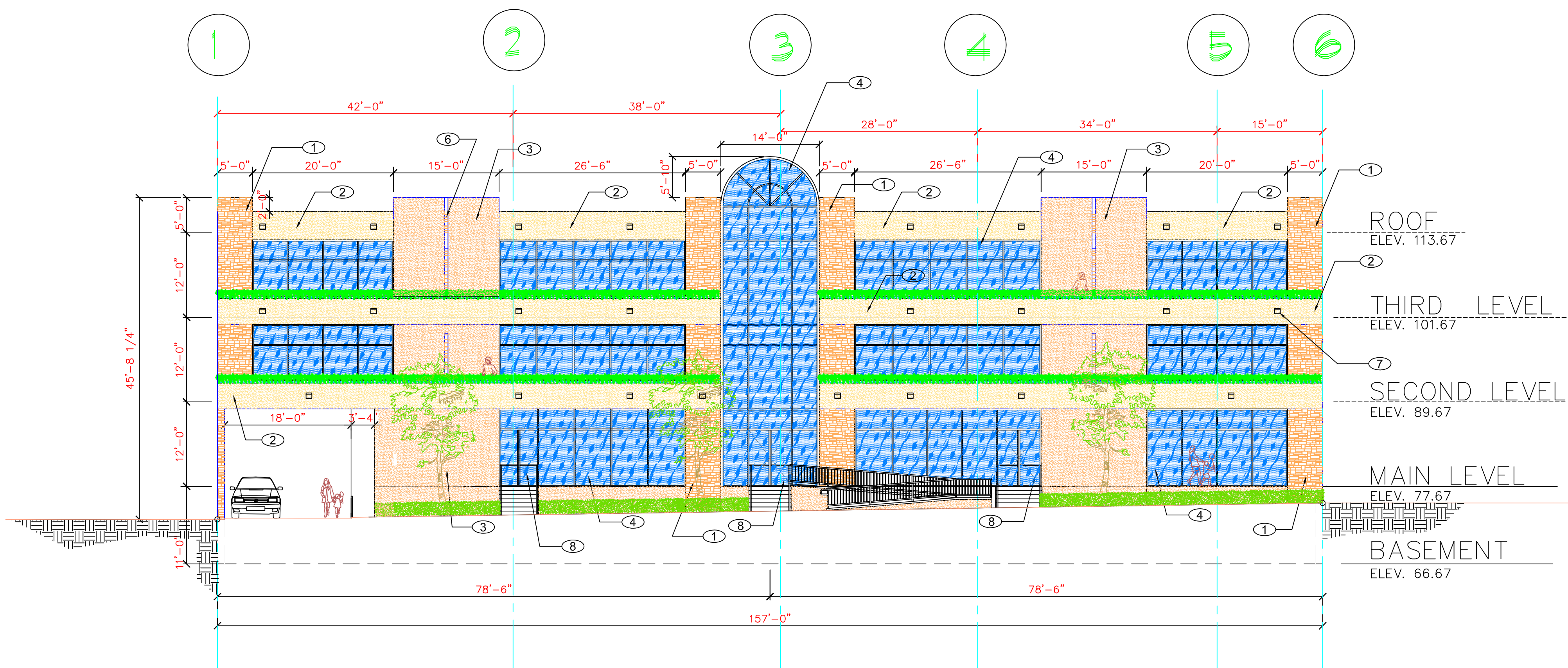


MATERIALS LEGEND	
①	STONE VENEER TO BE ICC-ES # ER-3588 EL DORADO STONE INSTALLED PER MANUF. SPECIFICATIONS.
②	EXTERIOR WALLS W/ 7/8 STUCCO OVER 60 MIN. FELT (TYP) USING LA HABRA' X-55 FRENCH VANILLA (BASE 100)
③	EXTERIOR WALLS W/ 7/8 STUCCO OVER 60 MIN. FELT (TYP) USING LA HABRA' X-71 MIAMI PEACH (BASE 200)
④	TEMPERED GLASS WINDOW PANEL
⑤	BLACK ALUMINUM STOREFRONT SYSTEM
⑥	WALL SEPARATING TERRACES TO USE STONE VENEER COVER. STONE VENEER TO BE ICC-ES # ER-3588 EL DORADO STONE INSTALLED PER MANUF. SPECIFICATIONS.
⑦	TYPICAL FLUORESCENT WALL MOUNTED LIGHT FIXTURE
⑧	TEMPERED GLASS DOOR PANEL

**NORTH (REAR) ELEVATION**  
 SCALE : 3/32"=1'-0"



**SOUTH (FRONT) ELEVATION**  
 SCALE : 3/32"=1'-0"